



Attendance

This week's attendance figures show that we have had another good week of attendance here at Abbey Mead. The table below shows attendance Monday to Thursday

Class	Average(%)
1AI	98.71
1PP	93.06
1SH	98.66
2EB	98.75
2NF	96.67
2SP	96.67
3AM	98.33
3IB	97.98
3SR	99.17
4CC	92.74
4KO	98.05
4KR	100.00
5CH/PS	94.64
5JH	96.77
5MB	98.33
6NK	100.00
6RT/RR	100.00
6ZE	99.58
FLL	92.86
FMC/AW	95.09
FOL/SS	92.66
The Meadow	94.44

Well done to 1AI, 1SH and 2EB who are joint KS1 winners this week.

Well done to all the classes who have achieved an incredible 100% attendance this week!



Thank You

A huge thank you to all our families, the community and everyone who kindly contributed towards the fundraising of our new sensory room. We highly value and appreciate every single donation. We will share updates and the photos of this new and exciting project as soon as it commences.

We still accepting contributions so please go to this link if you would like to donate:

[The Mead Educational Trust fundraising & online donations | KindLink](#)



Alternatively, if you prefer to give your contribution in cash, please feel free to contact the school office or speak to any member of staff around the school.

Parent /Carer Survey

At Abbey Mead, we aim to provide a stimulating and challenging learning environment where all pupils can attain their full potential. We are keen to seek your views on how well we are doing, what we could do to improve further and hear your thoughts on any further comments that you might have. Your feedback will help us evaluate where we are at present and help us to plan for continual improvements.

The questionnaire can be found here

<https://www.qdpsurvey.co.uk/OnlineQuestionnaire?code=26911-65408-32999276>

Please note all completed questionnaires will be analysed by QDP Services, an independent data processing company, who will treat all responses in the strictest confidence.

Thank you for your continued support.

How to scan a QR Code

- Open the Camera app on your phone.
- Hold your phone so that the QR code appears in view. Tap the notification to open the link associated with the QR code





Community Event



Community Drop-in session



Come and join us for our first drop-in session on

Friday 13th December

2.00 pm—3.30 pm

Community Wing

Bruin Street



COME AND FIND OUT WHAT ORGANISATIONS ARE ABLE TO PROVIDE YOU WITH ADVICE AND SUPPORT AROUND WELFARE RIGHTS, MENTAL HEALTH, IMMIGRATION, CRIME AND MUCH MORE...

તમારા વિસ્તારની સ્થાનિક સંસ્થા શું સમર્થન અને સલાહ આપી શકે છે તે જાણવા માટે સાથે આવો
یہ دیکھنے کے لیے آئیں کہ آپ کے علاقے میں کون سی مقامی تنظیم مدد اور مشورہ فراہم کر سکتی ہے

ਇਹ ਦੇਖਣ ਲਈ ਨਾਲ ਆਓ ਕਿ ਤੁਹਾਡੇ ਖੇਤਰ ਵਿੱਚ ਕਿਹੜੀ ਸਥਾਨਕ ਸੰਸਥਾ ਸਹਾਇਤਾ ਅਤੇ ਸਲਾਹ ਪ੍ਰਦਾਨ ਕਰ ਸਕਦੀ ਹੈ

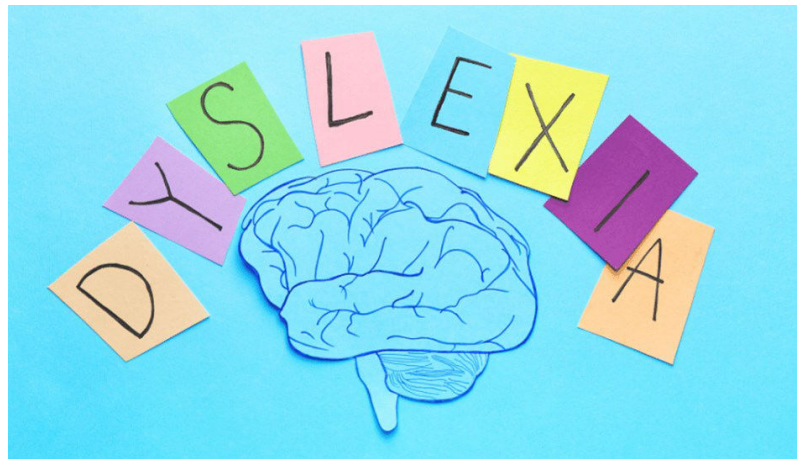


Upcoming Dates

- Year 6 visit to the Gurudwara—**Tuesday 26th November**
- Christmas Crafts Afternoon—**Friday 6th December @ 2.00 pm**
- TMET Christmas Concert—**Monday 9th December**
- Christmas / Nativity Play—**Wednesday 11th December**
- Christmas Jumper Day and Christmas Dinner — **Thursday 12th December**
- **Community Drop-in Session—Friday 13th December**
- Attendance Winners' Trip—**Wednesday 18th December**
- Christmas Holiday begins—**Monday 23rd December**

SEND information—Dyslexia

Richard Branson was diagnosed with dyslexia in his 20s. Dyslexia is a specific learning difficulty that mainly affects the development of literacy and language-related skills. He dropped out of school at the age of 15 and started a youth culture magazine called 'Student' shortly after. He went on to set up Virgin Records, a chain of



record stores, by the age of 22. There are now over 40 companies worldwide that are part of the Virgin Group. Branson is a billionaire and one of the world's richest people. He has also set various world records, including the fastest ever crossing of the Atlantic Ocean.

According to Branson, his dyslexia is one of the keys to his success. Although he reportedly struggled in school, he found that alternative strategies, such as visual learning, helped him. He says that his dyslexia is the reason he learned how to delegate, making him a successful business person. Branson actively seeks to employ other people with dyslexia, working with the charity Made By Dyslexia to support and empower dyslexic people in the workplace.



Abbey News @AbbeyMead_TMET

Miss Resch @MissResch_ · Oct 2

Today, 3SR have been exploring formal and informal letters and identifying similarities and differences between them. We even identified the key features of informal letters using our oracy skills. @Miss_Saujani @AbbeyMead_TMET



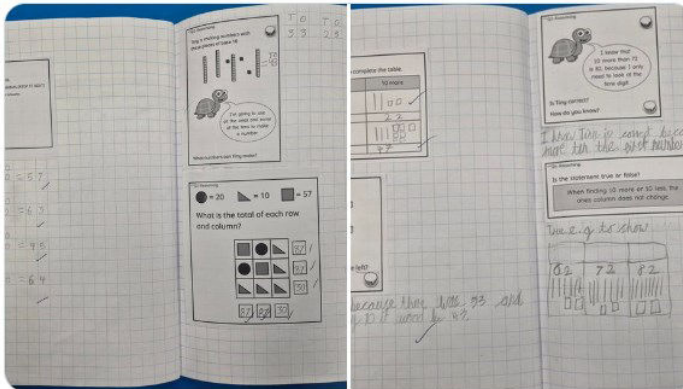
Abbey Mead Primary Academy @AbbeyMead_TMET · 16h

Nursery children have loved decorating their gingerbread men with play dough icing and handmade piping bags.



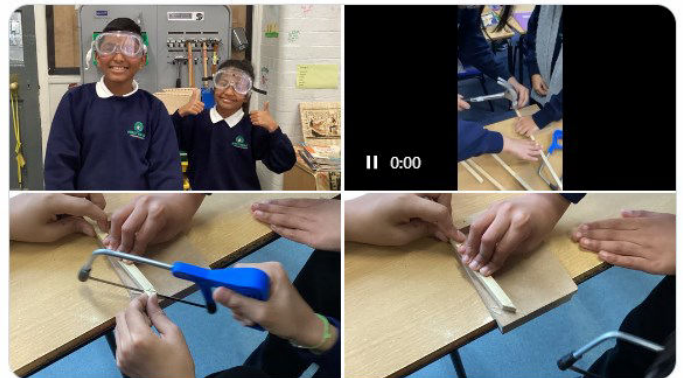
Miss Patel @MissPatel_AMPA · 16h

I have been so impressed with some of the children's presentation skills in year 2. We have been working hard to present and show our working out in maths. @AbbeyMead_Maths @AbbeyMead_TMET



Mr Browne @MrBrowneCanDo · Nov 20

In Year 5, we have started to create our base for our chosen frame. The frame is fundamental to help support our irrigation system. Each group has already faced a variety of challenges! Stay tuned to see our final product. @AbbeyMead_TMET



Abbey Mead Primary Academy @AbbeyMead_TMET · 1h

4CC had a fantastic time during our science lesson on Wednesday. We recreated the digestive system using a variety of objects to help us understand the journey our food takes after it enters our bodies. #science #digestivesystem



Abbey Mead Primary Academy @AbbeyMead_TMET · Nov 20

FOL/SS are enjoying the new change in the weather and exploring how the ice feels 🌨️ #eyfs #UTW

